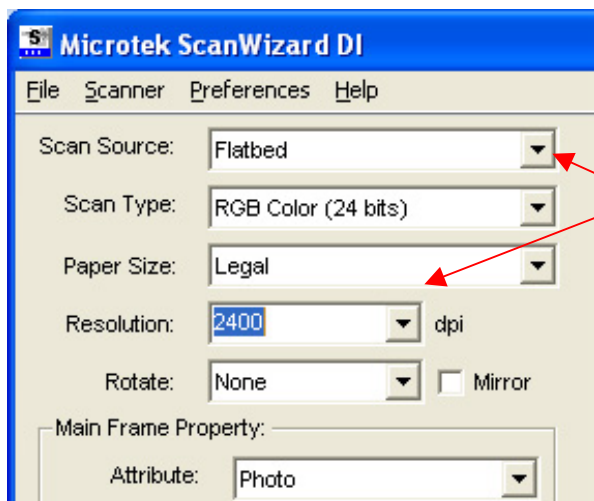


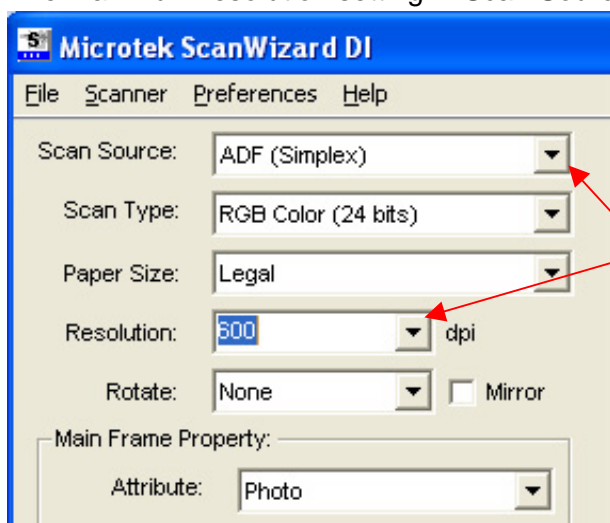
The maximum resolution setting for Scan Source : Flatbed / ADF ( Simplex ) / ADF ( Duplex ) of ArtixScan DI 4020 / ArtixScan DI 2020 list as follows.

1. The maximum resolution setting in Scan Source : Flatbed is 2400dpi.



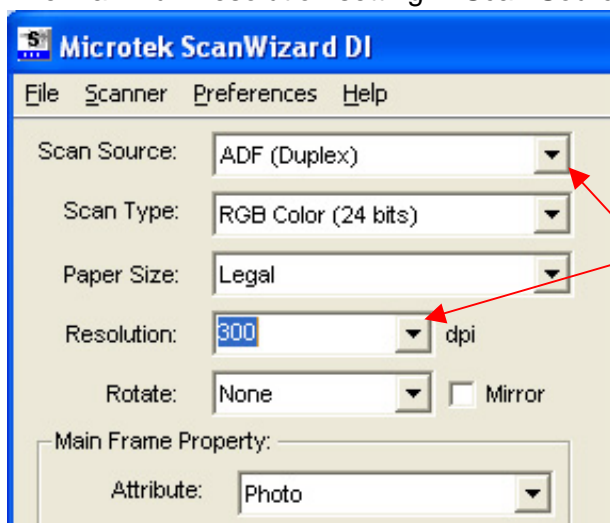
Microtek scanner S/W : ScanWizard DI can not accept the resolution setting of Scan Source : Flatbed over 2400dpi. This limitation is suitable for ArtixScan DI 4020 / ArtixScan DI 2020 product.

2. The maximum resolution setting in Scan Source : ADF ( Simplex ) is 600dpi.



Microtek scanner S/W : ScanWizard DI can not accept the resolution setting of Scan Source : ADF(Simplex) over 600dpi. This limitation is suitable for ArtixScan DI 4020 / ArtixScan DI 2020 product.

3. The maximum resolution setting in Scan Source : ADF ( Duplex ) is 300dpi.



Microtek scanner S/W : ScanWizard DI can not accept the resolution setting of Scan Source : ADF(Duplex) over 300dpi. This limitation is suitable for ArtixScan DI 4020 / ArtixScan DI 2020 product.