

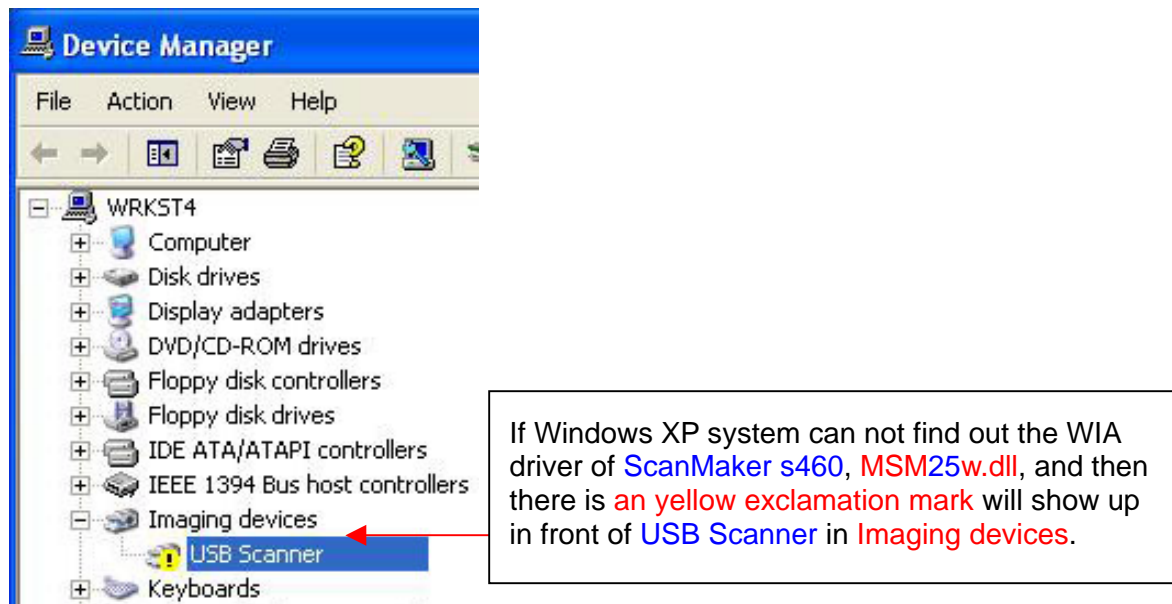
Where to find out the scanner driver of ScanMaker s460 for Windows 7 / Vista / XP system ?

MSM25w.dll is a certificated WIA driver of ScanMaker s460 for **Windows XP** system.

MSM25W2.dll is a certificated WIA driver of ScanMaker s460 for **Windows 7 / Vista** system.

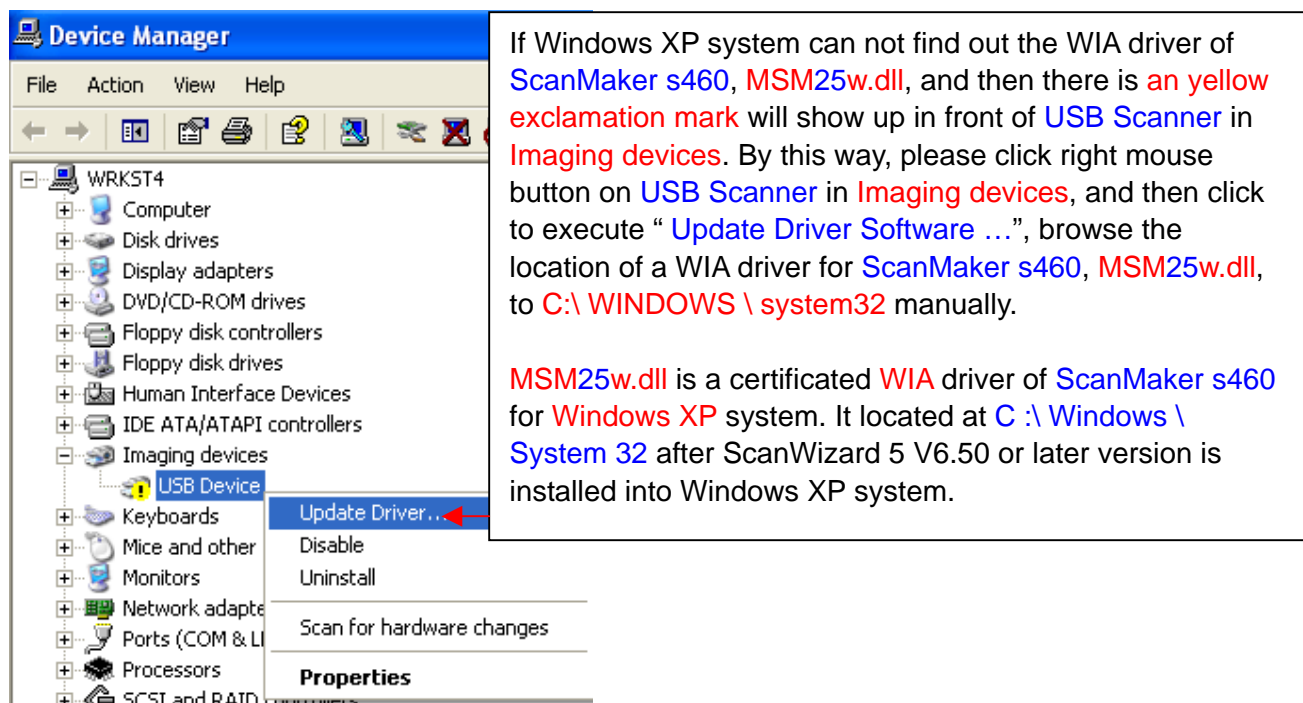
ScanWizard 5 V6.64 or later version can support **ScanMaker s460** to work under **Windows 7 (64 bit & 32 bit) / Vista (64 bit & 32 bit) / XP (32 bit) / 2000 / 98SE** system through an **USB2.0** connectivity.

If PC Windows system can not detect the linking device of **ScanMaker s460** through an **USB2.0** connectivity, by this way, there is **an yellow exclamation mark** will show up in front of **USB Scanner** in **Imaging devices** as the picture below.

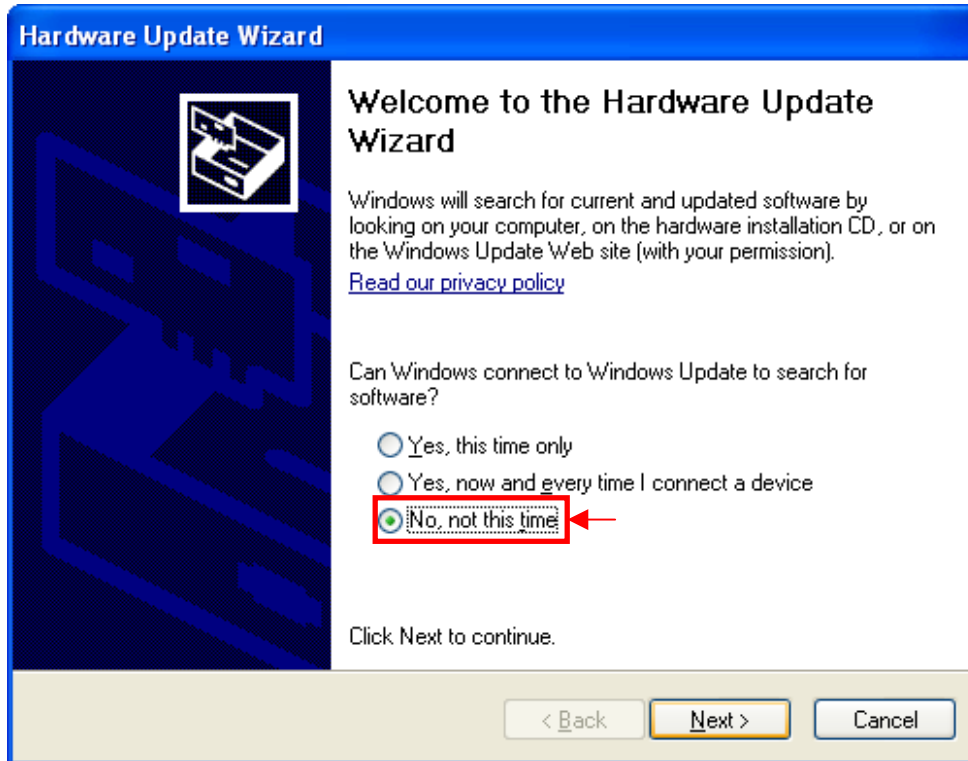


Please refer to the following procedure and keep Windows system search for a WIA driver of **ScanMaker s460**.

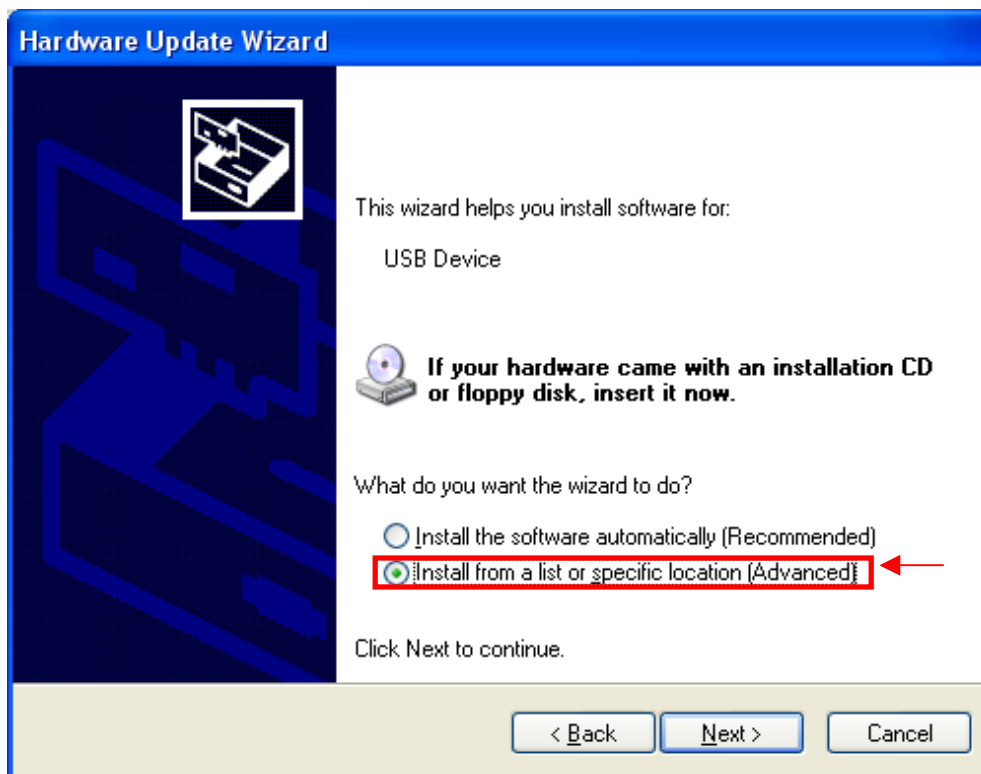
Step1. Click to execute “**Update Driver Software ...**” on **Imaging devices** as the picture below.



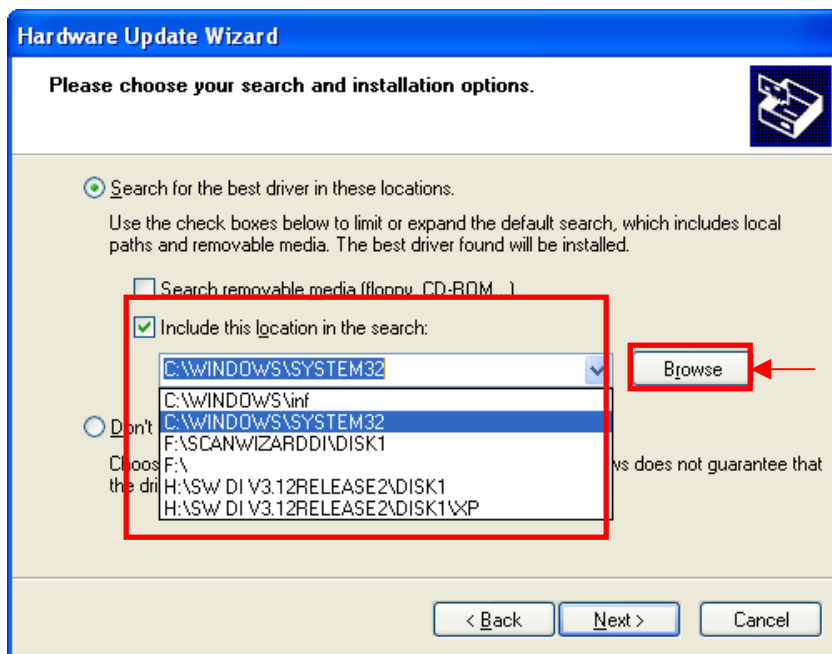
Step 2. Click to select “ No, not this time ” in Dialogue Message as the picture below.



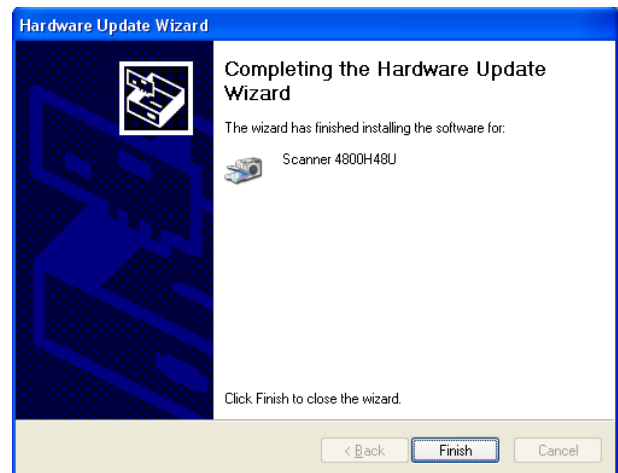
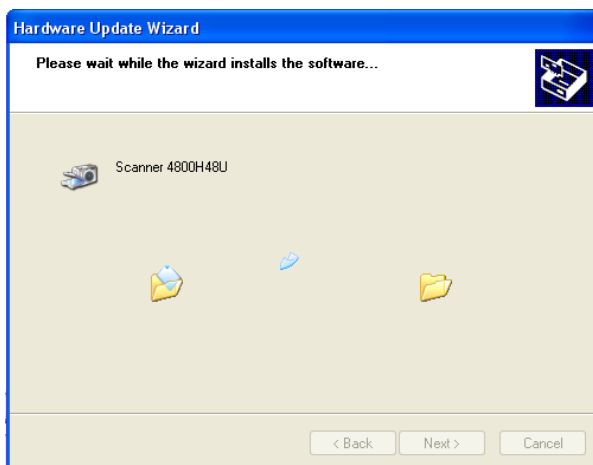
Step 3. Click to select “ Install from a list or specific location (Advanced) ” in Dialogue Message as the picture below.



Step 4. Click to browse the location of WIA driver to scanner driver S/W CD at disk drive F :, or at C : \ Windows \ System 32, or at C : \ Windows \ inf manually.



Step 5. If Windows system search for a WIA driver of [ScanMaker s460](#), and then Device Manager will detect the linking device as [Scanner 4800H48U](#) in Imaging devices as the picture below.



If your [ScanMaker s460](#) link with PC via an USB cable connection well, after that, you can check the linking device of [ScanMaker s460](#) from **Start** → **Control Panel** → **System** → **Hardware** → **Device Manager** → **Imaging devices** → [Scanner 4800H48U](#) under PC Windows XP system.

[Scanner 4800H48U](#) is a model code of ScanMaker s460 and had got the approved driver of Windows XP & the approved driver of Windows Vista from Microsoft on July, 2007.

The customer can find out the WIA driver of ScanMaker s460 for **Windows XP** system is existed in ScanWizard 5 V6.64 **CD** (or its later Version **CD**) from path at DVD drive **F : \ MSM25w.dll**.

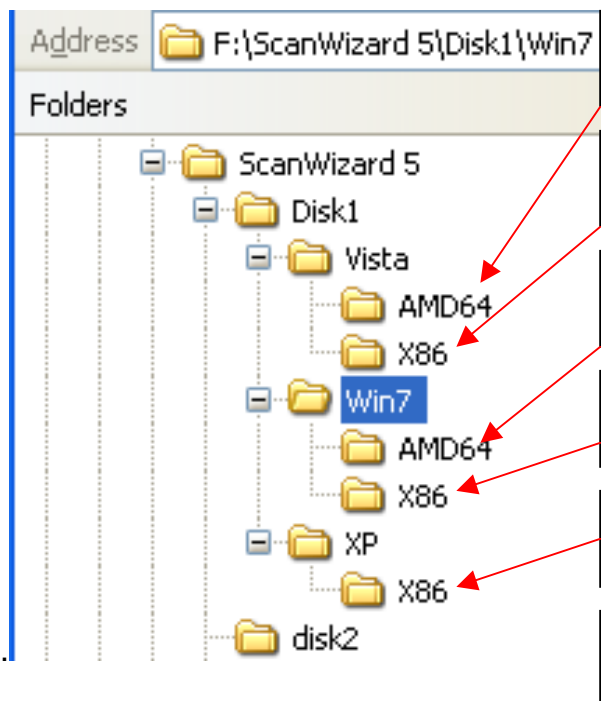
The customer can find out the WIA driver of ScanMaker s460 for **Windows Vista 64 bit** system is existed in ScanWizard 5 V6.64 **CD** (or its later Version **CD**) from path at DVD drive **F : \ ScanWizard 5 \ Disk 1 \ Vista \ AMD64 \ MSM25W2.dll**.

The customer can find out the WIA driver of ScanMaker s460 for **Windows Vista 32 bit** system is existed in ScanWizard 5 V6.64 **CD** (or its later Version **CD**) from path at DVD drive **F : \ ScanWizard 5 \ Disk 1 \ Vista \ X86 \ MSM25W2.dll**.

The customer can find out the WIA driver of ScanMaker s460 for **Windows 7 64 bit** system is existed in ScanWizard 5 V6.64 **CD** (or its later Version **CD**) from path at DVD drive **F : \ ScanWizard 5 \ Disk 1 \ Win7 \ AMD64 \ MSM25W2.dll**.

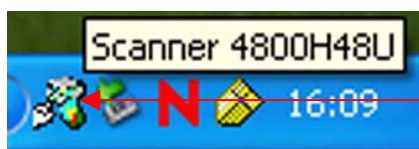
The customer can find out the WIA driver of ScanMaker s460 for **Windows 7 32 bit** system is existed in ScanWizard 5 V6.64 **CD** (or its later Version **CD**) from path at DVD drive **F : \ ScanWizard 5 \ Disk 1 \ Win7 \ X86 \ MSM25W2.dll**.

25 is a model code of WIA driver (**MSM25w.dll**) for ScanMaker s460, you can open to read its information from path at **C : \ Program Files \ Microtek \ ScanWizard 5 \ Scanners \ Msapn.ini**.



WIA driver (MSM25W2.dll) for Windows Vista 64 bit system is saving in Disk 1 \ Vista \ AMD64 .
WIA driver (MSM25W2.dll) for Windows Vista 32 bit system is saving in Disk 1 \ Vista \ X86 .
WIA driver (MSM25W2.dll) for Windows 7 64 bit system is saving in Disk 1 \ Win7 \ AMD64 .
WIA driver (MSM25W2.dll) for Windows 7 32 bit system is saving in Disk 1 \ Win7 \ X86 .
WIA driver (MIISW25.Inf) for Windows XP system is saving in Disk 1 \ XP \ X86 .
WIA driver (MSM25w.dll) for Windows XP system is saving in S/W CD at DVD drive F : .

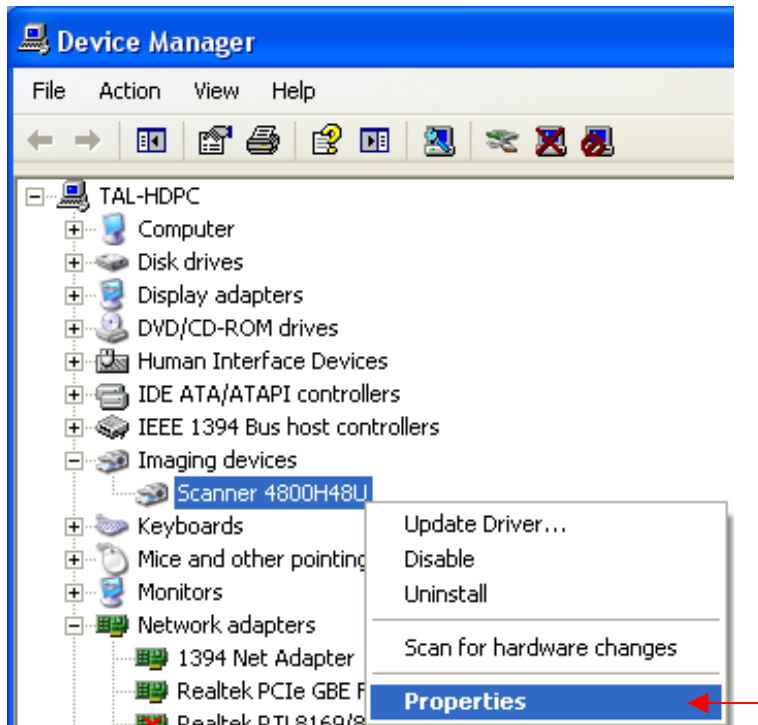
If **Device Manager** and **Scanner Finder** can identify the linking device of ScanMaker s460 as **Scanner 4800H48U** under PC Windows system, and then you can launch ScanWizard 5 V6.64 (or later version) and work with ScanMaker s460 under **Windows 7 (32 bit & 64 bit) / Vista (32 bit & 64 bit) / XP / 2000 / 98SE** system through an USB2.0 connectivity.



Here is an icon of **Scanner Finder**, it means Windows system can identify the linking device of **ScanMaker s460** as **Scanner 4800H48U** through an USB2.0 connectivity. **Scanner 4800H48U** is a model code of ScanMaker s460 and is a logo certification of ScanMaker s460 from Microsoft.

The following procedure is to tell you how to find out the location of WIA driver in Device Manager.

Step 1. Click right mouse button on **Scanner 4800H48U** in **Imaging devices**, and then click to execute “ **Properties** ” as the picture below.



Step 2. Click “ **Driver** ” in Main Menu at first, and then click “ **Driver Details** ” to read the location of WIA driver for **Scanner 4800H48U**, **MSM25w.dll**, it located at **C : \ Windows \ System 32**.

