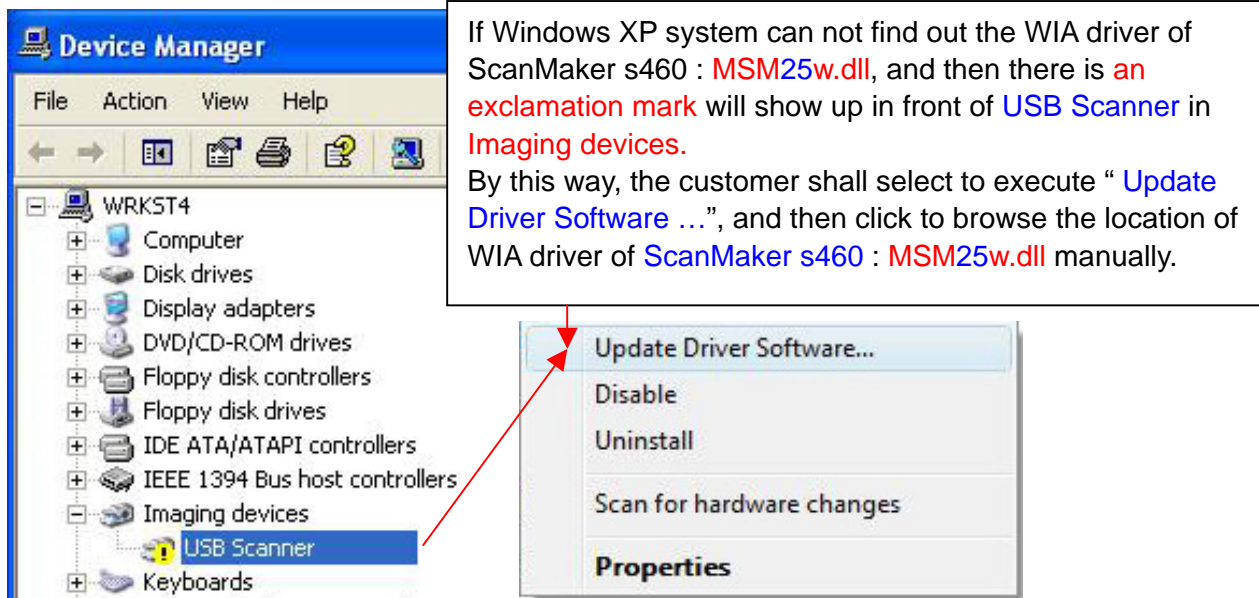


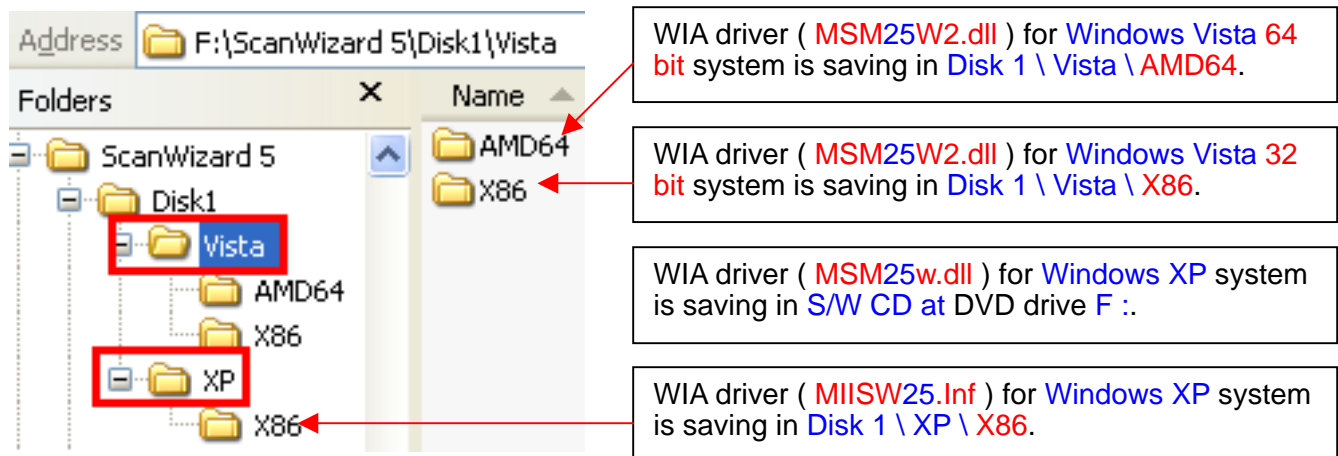
Where to find out the scanner driver of ScanMaker s460 for Windows XP & Vista system ?



The customer can find out the WIA driver of ScanMaker s460 for **Windows XP** system is existed in ScanWizard 5 V6.50 **CD** (or its later Version **CD**) from path at DVD drive **F : \ MSM25w.dll**.

The customer can find out the WIA driver of ScanMaker s460 for **Windows Vista 64 bit** system is existed in ScanWizard 5 V6.50 **CD** (or its later Version **CD**) from path at DVD drive **F : \ ScanWizard 5 \ Disk 1 \ AMD64 \ MSM25W2.dll**.

The customer can find out the WIA driver of ScanMaker s460 for **Windows Vista 32 bit** system is existed in ScanWizard 5 V6.50 **CD** (or its later Version **CD**) from path at DVD drive **F : \ ScanWizard 5 \ Disk 1 \ X86 \ MSM25W2.dll**.

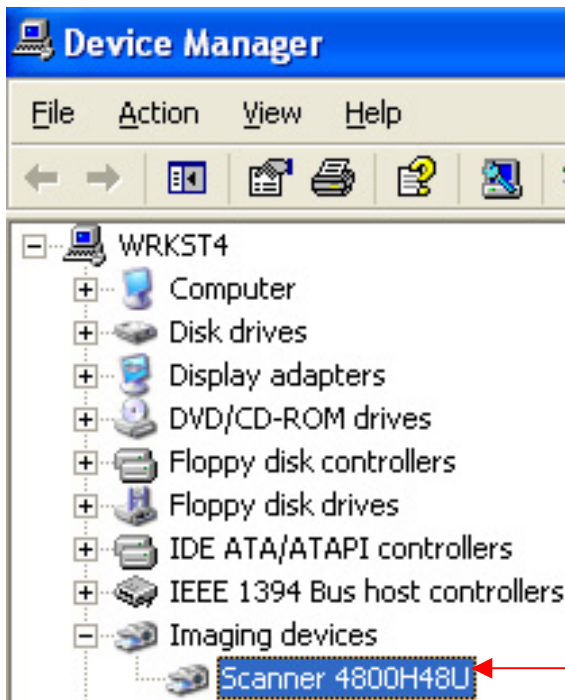


MSM25W2.dll is a certificated WIA driver of ScanMaker s460 for **Windows Vista** (**32 bit & 64 bit**) system. It located at **C : \ Windows \ System 32** after ScanMaker s460 linked with PC under Windows Vista system at the first time.

MSM25w.dll is a certificated WIA driver of ScanMaker s460 for **Windows XP** system. It located at **C : \ Windows \ System 32** after ScanWizard 5 is installed into Windows XP system.

25 is a model code of WIA driver (**MSM25w.dll**) for ScanMaker s460, you can open to read its information from path at **C : \ Program Files \ Microtek \ ScanWizard 5 \ Scanners \ Msapn.ini**.

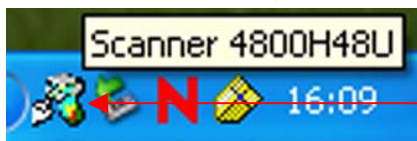
If PC Windows XP system can identify the linking device of ScanMaker s460 through USB 2.0 connectivity, after that, the customer can check the information of linking device from **Start** → **Control Panel** → **System** → **Hardware** → **Device Manager** → **Imaging devices** → **Scanner 4800H48U** as below illustration.



If your **ScanMaker s460** link with PC via USB cable connection well, after that, you can check the linking device of **ScanMaker s460** from **Start** → **Control Panel** → **System** → **Hardware** → **Device Manager** → **Imaging devices** → **Scanner 4800H48U** under PC Windows XP system.

Scanner 4800H48U is a model code of ScanMaker s460 and had got the approved driver of Windows XP & the approved driver of Windows Vista from Microsoft on July, 2007.

At this moment, if the icon of **Scanner Finder** can detect the linking device of ScanMaker s460 : **Scanner 4800H48U** under PC Windows system, by this way, the customer can launch **ScanWizard 5 V6.50** or its later version, and then do photo scan with ScanMaker s460 under PC **Windows Vista** / XP (32 bit) / 2K / 98SE system through USB2.0 connectivity.



Scanner 4800H48U is a model code of ScanMaker s460 and is a logo certification of ScanMaker s460 from Microsoft.