

The procedure how to keep Microtek scanners to work under Windows Vista system

Date : July / 01 / 2009

1. For those Microtek scanner models which did not get approved driver of Windows Vista from Microsoft, ScanWizard 5 V6.31 is the last version of scanner driver S/W that can support these scanner models to work under Windows Vista system through USB / FireWire connectivity.
2. ScanWizard 5 V6.31 is a compatible scanner driver S/W for Windows Vista system.
The Supported Scanner Models in ScanWizard 5 V6.31 list you as follows.
SM s480, SM s450, SM s430, SM s400, SM s400II, SM s280, SM s200, SM i900, SM i800, SM i700, SM i410, SM i320, SM i300, SM 8700, SM 6800, SM 6700, SM 6100, SM 6000, SM 5950, SM 5900, SM 5800, SM 5800II, SM 5700, SM 5600, SM 4900, SM 4850, SM 4800, SM 4100, SM 3880, SM 3860, SM 3840, SM 3830, SM 3800, SM 3740, SM 3640T, SM 3640, SM 3600, and SM X12USL.
3. ScanWizard 5 V6.31 can support above Microtek scanners to work under Windows Vista (32 bit & 64 bit) system through USB connectivity, and can support above Microtek scanners to work under Windows Vista 32 bit system through FireWire connectivity.
4. If you want to keep your Microtek scanners to work under Windows Vista 64 bit system through FireWire connectivity, you shall get the hot fix : 922498 from Microsoft at first, and then install this hot fix into Windows Vista 64 bit system. Please link to URL at <http://support.microsoft.com/kb/922498/en-us> for detailed information.
5. If you want to keep your Microtek scanners to work under Windows XP 64 bit system through USB / FireWire connectivity, you shall get the hot fix : KB902390 and KB922498 from Microsoft at first, and then install these two hot fix into Windows XP 64 bit system.
6. In the supported list of ScanWizard 5 V6.31, it included Windows Vista approved driver for ScanMaker s450 and ScanMaker s480 only. Hence, if Windows Vista system claim logo certification of Windows Vista driver for linking device, which did not get approved driver of Windows Vista from Microsoft, by this way, please browse it to C:\Windows\Inf manually, and then keep your Microtek scanner to work under Windows Vista system through USB / FireWire connectivity.
7. The installation of scanner driver S/W shall be installed with administrator's privilege under PC Windows Vista / XP / 2K system.
8. When you do scanner driver S/W installation or un-installation under PC Windows system, the scanner can not link with PC computer via USB / FireWire cable connection, or the driver installation or driver un-installation under PC Windows system will be affected, and then make your linking scanner can not work under PC Windows system properly, please watch this point well, thanks.
9. Please refer to the following instruction, and do Microtek scanner driver S/W installation under PC Windows system.
 - a. Make sure USB / FireWire cable not link with scanner at first, and then power off your scanner.
 - b. Remove old version of Microtek scanner driver S/W from your PC Windows system.
 - c. Download new version of scanner driver S/W : ScanWizard 5 V6.31 from Microtek website at <http://ww3.microtek.com.tw/eu/modules/tinyd0/index.php?id=2>, after that, install this scanner

driver S/W into your PC Windows system.

- d. Download Help file : **SW5Help V1.04** and OCR Engine : **Abbyy FineReader OCR V4.0** from Microtek URL at <http://ww3.microtek.com.tw/eu/modules/tinyd0/index.php?id=2>, after that, install these two files into your PC Windows system respectively.
- e. Restart your PC Windows system again.
- f. Power up your scanner at first, and then make a **USB / FireWire** cable connection between PC and your scanner.

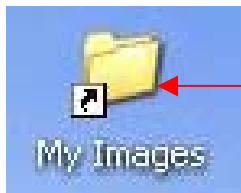
10. After you complete to install scanner S/W : ScanWizard 5 into PC Windows system, and then you can find out the icon of “ **Microtek Scanner Configuration** ”, “ **ScanWizard 5** ”, and “ **My Images** ” will list you on the Desktop of PC Windows system as below illustration.



Double click the icon of “ **Microtek Scanner Configuration** ” from the Desktop of PC Windows system, by this way, you can get into the setting of “ **Microtek Scanner Configuration** ”, define the setting of each button function, do image scanning with Microtek scanner by pressing button on control panel of scanner.

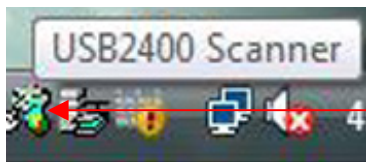


Double click the icon of “ **ScanWizard 5** ” from the Desktop of PC Windows system, and then you can get into stand-alone version of ScanWizard 5 and do image scanning with Microtek scanner.



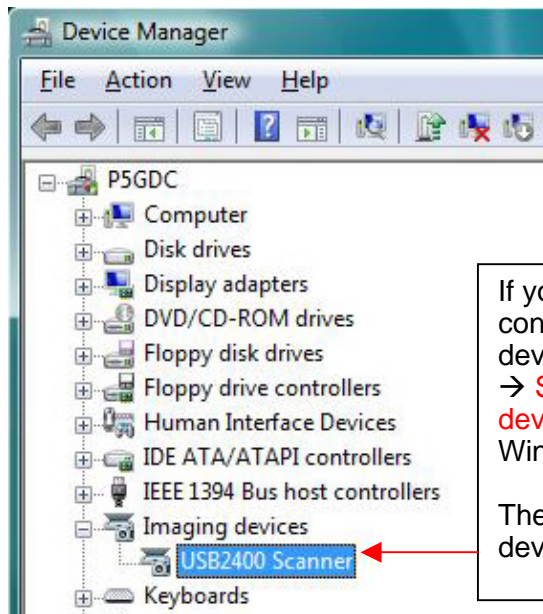
All of scanned images in ScanWizard 5 will be saved into **folder : My images**, its default path in PC Windows system located at “ **C:\Program Files \ Microtek \ ScanWizard 5 \ My Images** ”.

11. If the user make a USB cable connection between PC and **SM 4900** under Windows Vista system, at this moment, if **Scanner Finder** can detect the linking device of **SM 4900**, by this way, the icon of **Scanner Finder** will show up in resident area of PC Windows system as below illustration.



This is an icon of “ **Scanner Finder** ”, it means **scanner has linked with PC Windows system successfully**, if scanner finder can detect scanner while scanner link with PC via USB cable connection well, and then this icon will show up in resident area of PC Windows system.
“ **USB2400 Scanner** ” is a model code of **SM 4900** and is also the logo certification of Windows XP approved driver from Microsoft.

12. The user can do image scanning in **ScanWizard 5 V6.31** under PC Windows Vista system, while Scanner Finder and the Imaging devices in Device Manager can recognize the linking device of scanner as below illustration.



If your ScanMaker 4900 link with PC via USB cable connection well, after that, you can check the linking device of ScanMaker 4900 from **Start → Control Panel → System → Hardware → Device Manager → Imaging devices → USB2400 Scanner** under PC Windows XP / Windows Vista system.

The model code of ScanMaker 4900 in Imaging devices of Device Manager is “USB2400 Scanner”.

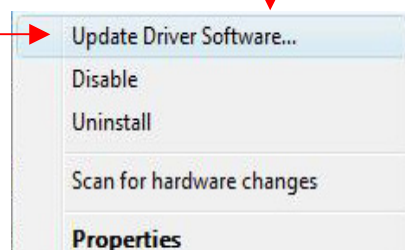
13. If Scanner Finder can not detect the linking scanner is existed in Windows Vista system, by this way, you shall browse it to **C: Windows / Inf** manually as below illustration.

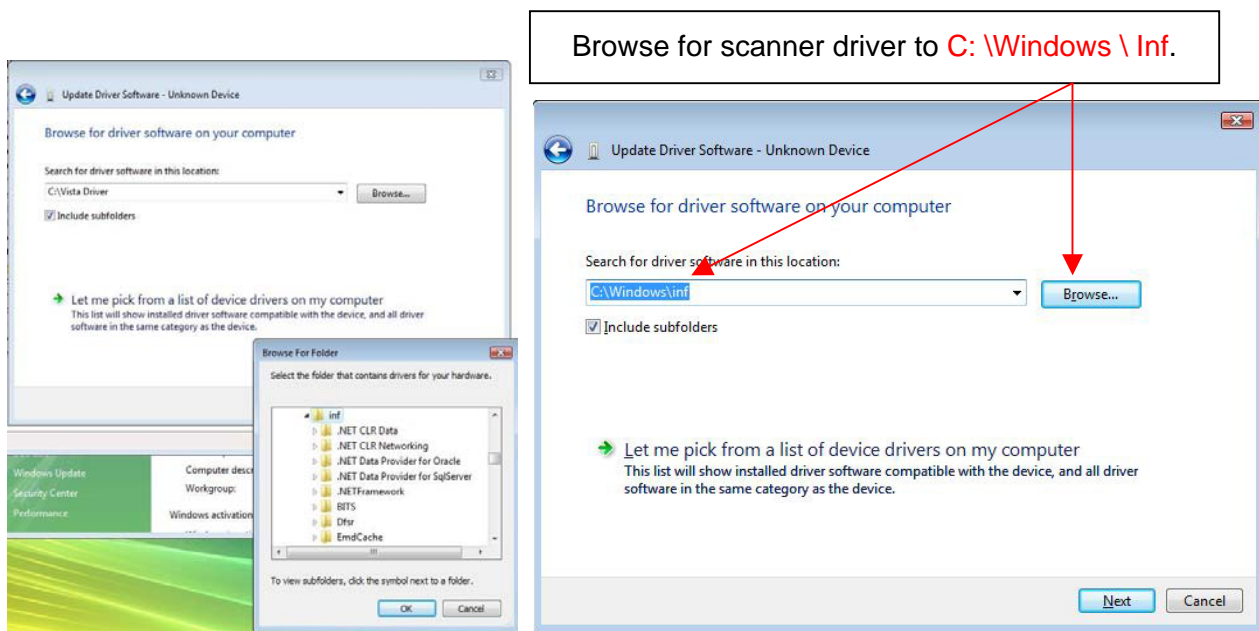


This is an icon of “Scanner Finder” show you “Scanner is not ready”, it means PC Windows system can not detect scanner has linking successfully, if scanner finder can not find scanner while scanner link with PC via USB connection, and then this icon will show you up in resident area of PC Windows system.

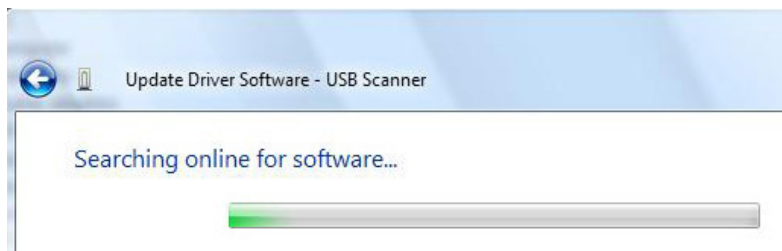


If PC Windows system do not has scanner driver for ScanMaker 4900, and then there is an exclamation mark will show up in front of USB Scanner in Imaging devices. By this way, you shall select to execute “Update Driver Software ...”, and then browse it to find out the scanner driver of SM 4900 manually.

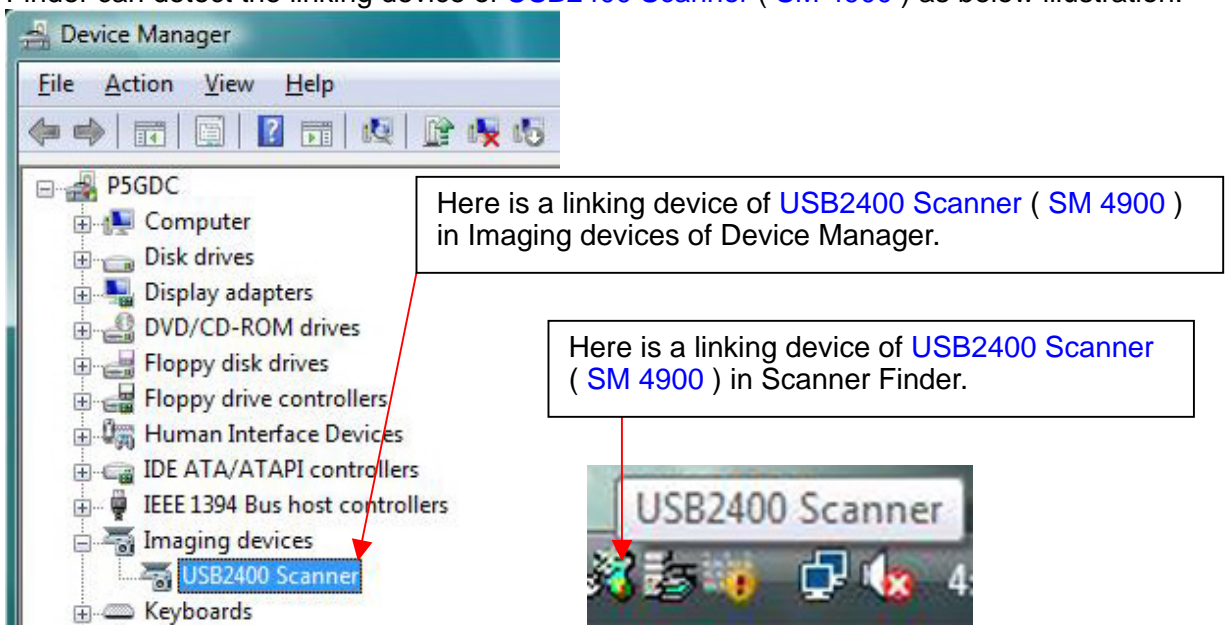




14. After that, Windows Vista system will start to search for driver of scanner as below illustration.



15. If Windows Vista system searched for driver of its linking scanner device successfully, by this way, you can find out [USB2400 Scanner](#) in Imaging devices of Device Manager and Scanner Finder can detect the linking device of [USB2400 Scanner \(SM 4900 \)](#) as below illustration.



16. You can double click the icon of ScanWizard 5 from desktop, and then SM 4900 will make preview scan in standard control panel of ScanWizard 5 as below illustration.



17. Below table is the latest version of Microtek scanner driver S/W for PC Windows Vista system.

Microtek Scanner Driver S/W	The latest version of scanner driver S/W
ScanWizard 5 (PC version)	ScanWizard 5 V6.60 (released on September-03-2008)
ScanWizard DI (PC version)	ScanWizard DI V2.03 (released on December-04-2008)
ScanWizard Pro (PC version)	ScanWizard Pro V7.12 (released on December-01-2008)
ScanWizard Pro TX (PC version)	ScanWizard Pro TX V7.10 (released on May-22-2008)

- ScanWizard 5 V6.60 included Windows Vista approved driver for SM s480 / SM s460 / SM s450 / SM s400II / SM s280 / SM i700 / SM i800 / SM 3860 / SM 3880 / SM 4100 / SM 5800II / SM 5950 / SM 6000.
- ScanWizard DI V2.03 included Windows Vista approved driver for AS DI 3010c / AS DI 4020 / AS DI 2020 / AS DI 2010 / AS DI 1210 / SM 5950 / MiniScan C5.
- ScanWizard Pro V7.12 included Windows Vista approved driver for AS M1/ AS F1/ AS 1800f / SM i800 / SM i900 / SM 9800XL / SM 1000XL.
- ScanWizard Pro TX V7.10 included Windows Vista approved driver for AS 120tf.

You can link to Microtek website at <http://ww3.microtek.com.tw/eu/modules/tinyd0/index.php?id=2>, and then download the demanded scanner driver S/W from there.

18. For details regarding products with Vista compatible scanner software, please refer to below table.

Model Name	Windows Vista Compatible Scanner Driver Software			
	SW Pro TX V7.10	SW Pro V7.12	SW 5 V6.60	SW DI V2.03
ArtixScan 120tf	○			
ArtixScan M1		○		
ArtixScan F1		○		
ArtixScan 1800f		○		
ScanMaker 1000XL		○		
ScanMaker 9800XL		○		
ScanMaker i900		○		
ScanMaker i800		○	○	
ScanMaker i700			○	
ScanMaker s280			○	
ScanMaker s400II			○	
ScanMaker s450			○	
ScanMaker s460			○	
ScanMaker s480			○	
ScanMaker 3860			○	
ScanMaker 3880			○	
ScanMaker 4100			○	
ScanMaker 5800II			○	
ScanMaker 6000			○	
ScanMaker 5950			○	○
ArtixScan DI 1210				○
ArtixScan DI 2010				○
ArtixScan DI 2020				○
ArtixScan DI 4020				○
ArtixScan DI 3010c				○
MiniScan C5				○

Please refer to the URL (<http://ww3.microtek.com.tw/eu/modules/tinyd0/index.php?id=2>) to check last-updated Windows Vista compatible scanner driver software for your Microtek scanner.

19. The following Microtek scanner driver S/W can support Microtek scanners to **run** under Win2K / XP / Vista system **without administrator's privilege**.

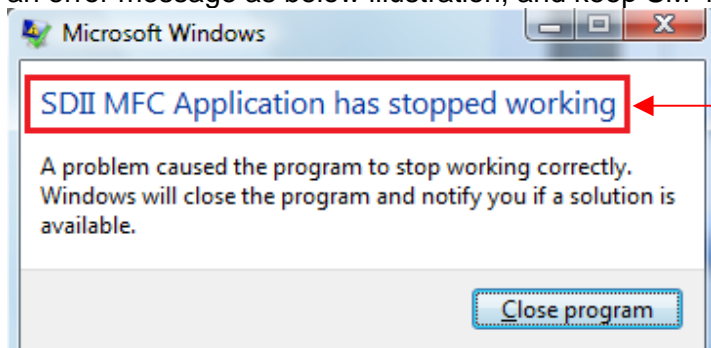
- a. ScanWizard 5: V6.30 and its later version.
- b. ScanWizard DI: V1.42 and its later version.
- c. ScanWizard Pro: V7.03 and its later version.
- d. ScanWizard Pro Tx V7.10 and its later version.

While the customer do S/W installation for ScanWizard 5 V6.30 / ScanWizard DI V1.42 / ScanWizard Pro V7.03 / ScanWizard Pro Tx V7.10 and its later version under Windows Vista / XP / 2K system, the user shall also log in with **administrator's** privilege.

Notice :

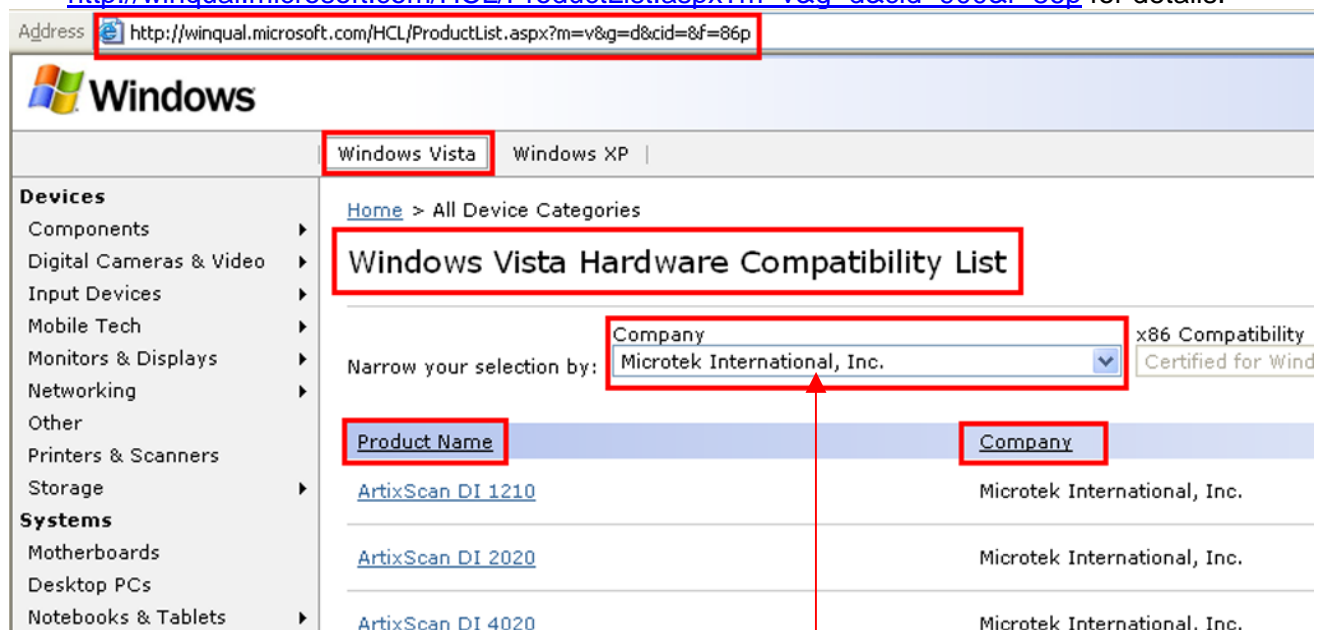
- A. Above Microtek scanner driver S/W can support Microtek scanners to work under **Windows Vista (32 bit & 64 bit)** system through **USB** connectivity, and can support Microtek scanners to work under **Windows Vista 32 bit** system through **FireWire** connectivity.

- B. If you want to keep your Microtek scanners to work under Windows **Vista 64 bit** system through **FireWire** connectivity, you shall get the **hot fix : 922498** from Microsoft at first, and then install this **hot fix** into Windows **Vista 64 bit** system. Please link to URL at <http://support.microsoft.com/kb/922498/en-us> for detailed information.
- C. **Adaptec SCSI card : 29320ALP** is the suggested SCSI card from Microtek RDC, it can support Microtek scanners to work with Microtek scanner driver S/W for Windows Vista under **Windows Vista (32 bit & 64 bit)** system through **SCSI** connectivity.
- D. If you want to keep your Microtek scanners to work under Windows **XP 64 bit** system through **USB / FireWire** connectivity, you shall get the **hot fix : KB902390** and **KB922498** from Microsoft at first, and then install **these two hot fix** into **Windows XP 64 bit** system.
- E. While **SM 4600** run with **ScanWizard 5 V6.31** under Windows Vista system, the system will report an error message as below illustration, and keep **SM 4600** stop working in ScanWizard 5.



This error message means **ScanWizard 5 V6.31** can not support **SM 4600** to work under Windows Vista system.

20. You can find out the information of Microtek scanners which get approved driver of Windows Vista from Hardware Compatibility Test of Windows Vista of Microsoft website at <http://winqual.microsoft.com/HCL/ProductList.aspx?m=v&g=d&cid=900&f=86p> for details.



When you link to Microsoft website to view the Hardware Compatibility Test of Windows Vista for Microtek scanners, you shall select Company Name of Device (example : **Microtek International, Inc.**) at first.