

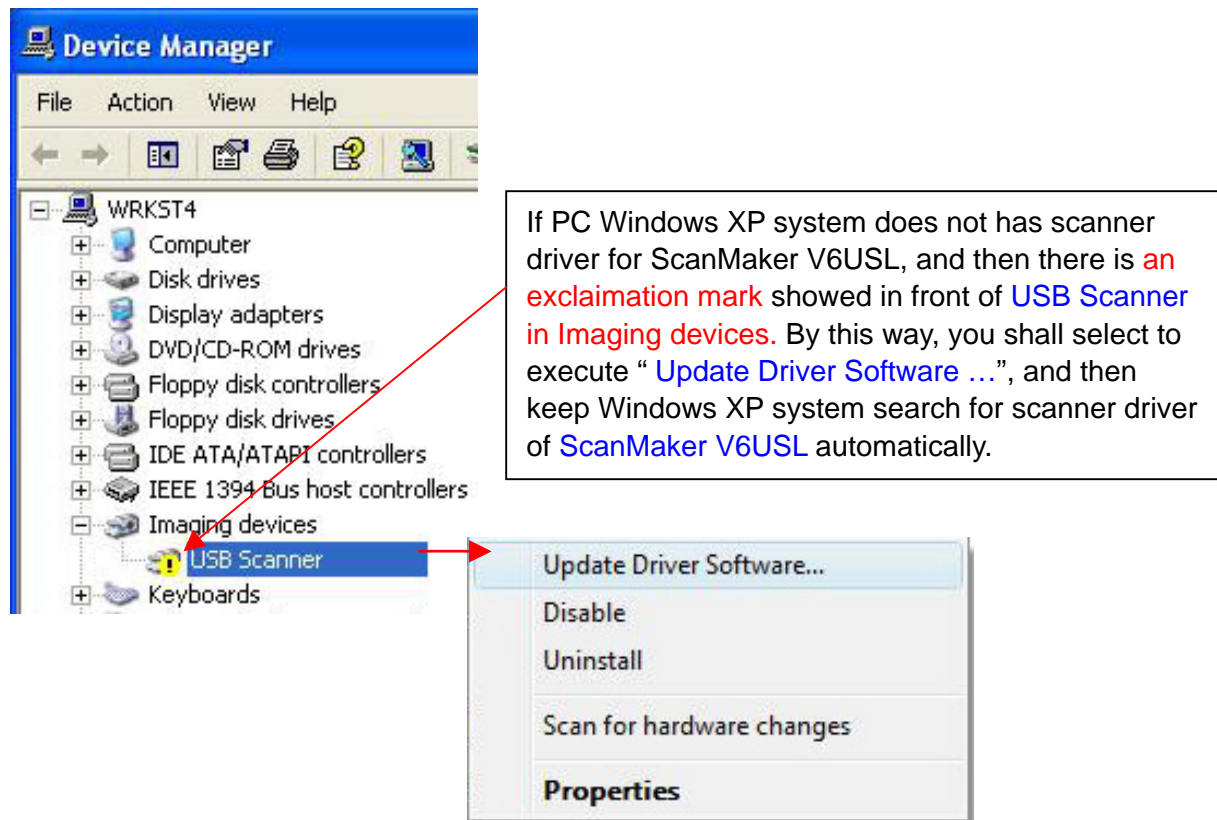
The procedure how to keep your Microtek scanners to work under WinXP system

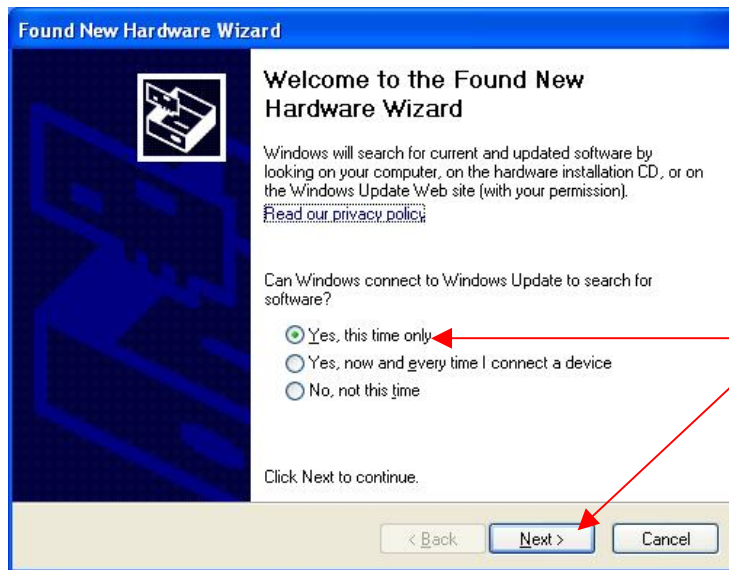
For some of old model of Microtek scanners which did not get logo certification of WinXP from Microsoft before, you can refer to the following procedure and keep your scanner to work under WinXP system. (Make sure your scanner S/W can support scanner to work under WinXP system.)
(The logo certification of scanner driver for WinXP is saved in C : \ WINDOWS \ System32 \ MSMxxw.dll. xx is model code of scanner driver.)

ScanMaker V6USL did not claim the certification of WinXP logo from Microsoft before, hence, if WinXP claimed the driver of “ New Hardware Device “ from linking device, please refer to the following procedure, and complete the driver installation of SM V6USL under PC Win XP system.

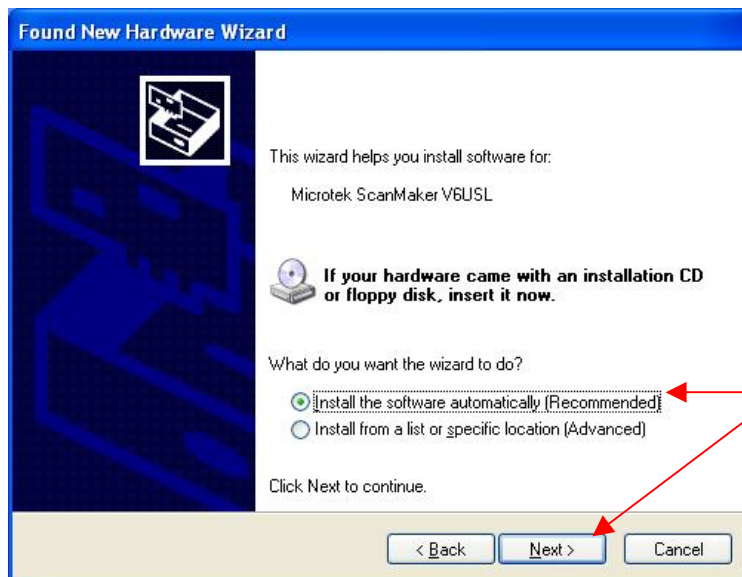
1. Make sure ScanMaker V6USL is powered up and has linked with PC Win XP system via USB connection.
2. Make sure ScanWizard 5 V5.76 or its later version had installed into Windows XP system.
3. If PC Windows XP system can not detect linking device of SM V6USL from **Control Panel** → **System** → **Hardware Device** → **Device Manager** → **Imaging devices**, and there is an **exclamation mark** show in front of **USB Scanner in Imaging devices** as below illustration.

By this way, the user shall select to execute “ **Update Driver Software ...**”, and then keep Windows XP system search for scanner driver of ScanMaker V6USL automatically.





Select this item,
and then click " Next ".

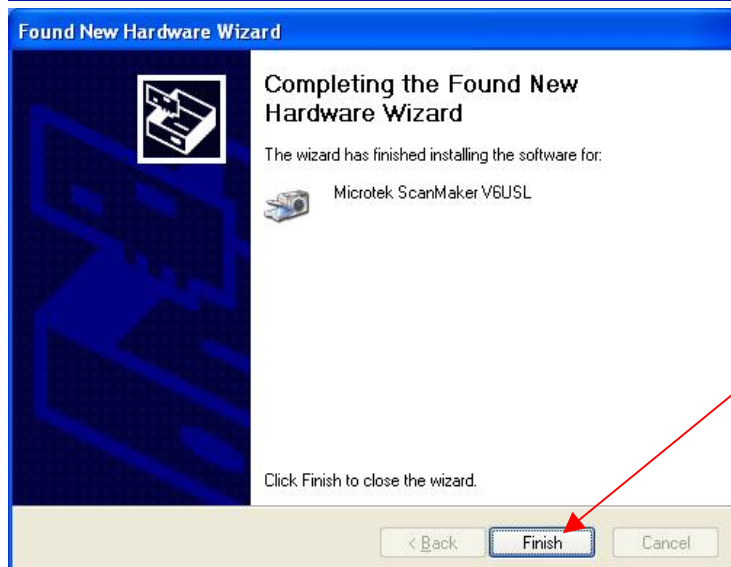


Select this item,
and then click " Next ".



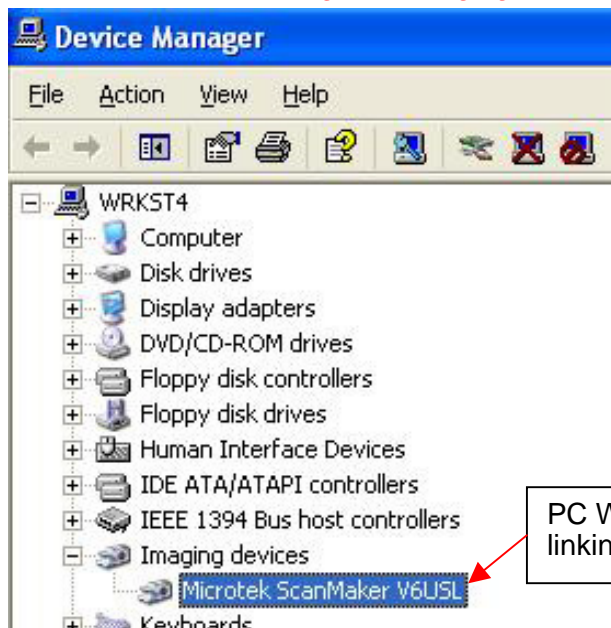


Click “ **Continue Anyway** ” to complete driver installation for your SM V6USL under WinXP system.



WinXP system had found the driver of SM V6USL already. Click “ **Finish** ” to complete “ Found New Hardware Wizard ”.

4. Check device connection of SM V6USL is O.K. or not from **Control Panel** → **System** → **Hardware Device** → **Device Manager** → **Imaging devices** as below illustration.



PC Windows XP system has recognized the linking device of scanner is **ScanMaker V6USL**.

5. Make sure **Scanner Finder** can detect USB linking device and show the icon as below illustration.



If **Scanner Finder** can detect USB linking device while **ScanMaker V6USL** link with PC via USB cable connection well, and then this icon will show up in resident area of PC Windows XP system.

6. Double click the icon of “**ScanWizard 5**” from the desktop of PC Windows system, and then do image scanning in **Standard Control Panel** of **Microtek ScanWizard 5** as below illustration.



Double click the icon of “**ScanWizard 5**” from the Desktop of PC Windows system, and then you can get into stand-alone version of ScanWizard 5 and do image scanning with Microtek scanner.



You can click this icon, and change the setting to **Advanced Control Panel** of **ScanWizard 5**.

Here is stand-alone version of ScanWizard 5, it is in **Standard Control Panel** of ScanWizard 5 now.

Below illustration is in [Advanced Control Panel](#) of Microtek ScanWizard 5.

Microtek ScanWizard 5 - Advanced Control Panel : Overview

Scanner View Preferences Correction Help

Overview Prescan [Icons] Scan to [Icon]

Scan Job Queue

Status	Type	Job Title	Size
✓	RGB	Untitled1	334 KB
✓	RGB	Untitled2	307 KB
✓	RGB	Untitled3	332 KB
✓	RGB	Untitled4	322 KB

☐ One-pass Scan for Multiple Jobs
☒ Multiple Auto-crop for EZ-Lock Film Holder

[Icons: DUP, NEW, DEL, CHK, LOAD SAVE]

Total Scan Jobs: 4 Job(s) Scanned: 0

Settings

Scan Job : Untitled1
 Type : RGB Colors
 Resolution : 300 ppi
 Scan Frame x Scaling = Output
 W: 1.41 100% 1.41 inch
 H: 0.90 0.90
 Image Size : 334 KB
☐ Fixed Scan Frame
☐ Fixed Output Size
☒ Keep Proportion

White/Black Pts: Automatic
 Tone Curve: No Correction
 Brt/Contrast: No Correction
 Color Correction: No Correction
 Filter: Sharpen Medium
 Descreen: None

☒ Automatic Color Restoration

Reset

Microtek While selecting, press "CTRL" key to keep aspect ratio selection, or press "SHIFT" key to add new job.

You can click this icon, and change the setting to **Standard Control Panel of ScanWizard 5.**

Here is **Settings** Window in **Advanced Control Panel** of Microtek ScanWizard 5.