

The procedure to produce a new Shading Data for Reflective Scan of Medi-6000

The design of Medi-6000 can support **Reflective** Scan and **X-Ray (Film)** Scan in scanner driver S/W : ScanWizard Medi under Windows Vista / Windows XP / Windows 2000 system.

There are two bundled S/W CDs are included in shipping package of Medi-6000. One S/W CD is ScanWizard Medi CD, another S/W CD is Calibration Data CD.



Here is a ScanWizard Medi S/W CD (P/N : 514-30-500100) for Medi-6000.

Here is a Calibration Data CD (P/N : 514-30-280011) for Medi-6000.

The customer shall install **ScanWizard Medi S/W CD** into PC Windows at first, and then install **Calibration Data CD** afterwards.

Calibration Data CD included shading data : **SM52_ShadingData.ini** for Reflective Scan of Medi-6000, each of Medi-6000 will has their specific shading data for Reflective Scan in ScanWizard Medi, hence, **the S/N in Calibration Data CD shall match with the unit S/N of its Medi-6000** and can not be exchanged. Or the scanned image from Reflective Scan may produce vertical stripe in it.



the S/N in Data CD shall match with the unit S/N of its Medi-6000 (W9550D00009G). Hence, the customer shall keep this Data CD all the way.

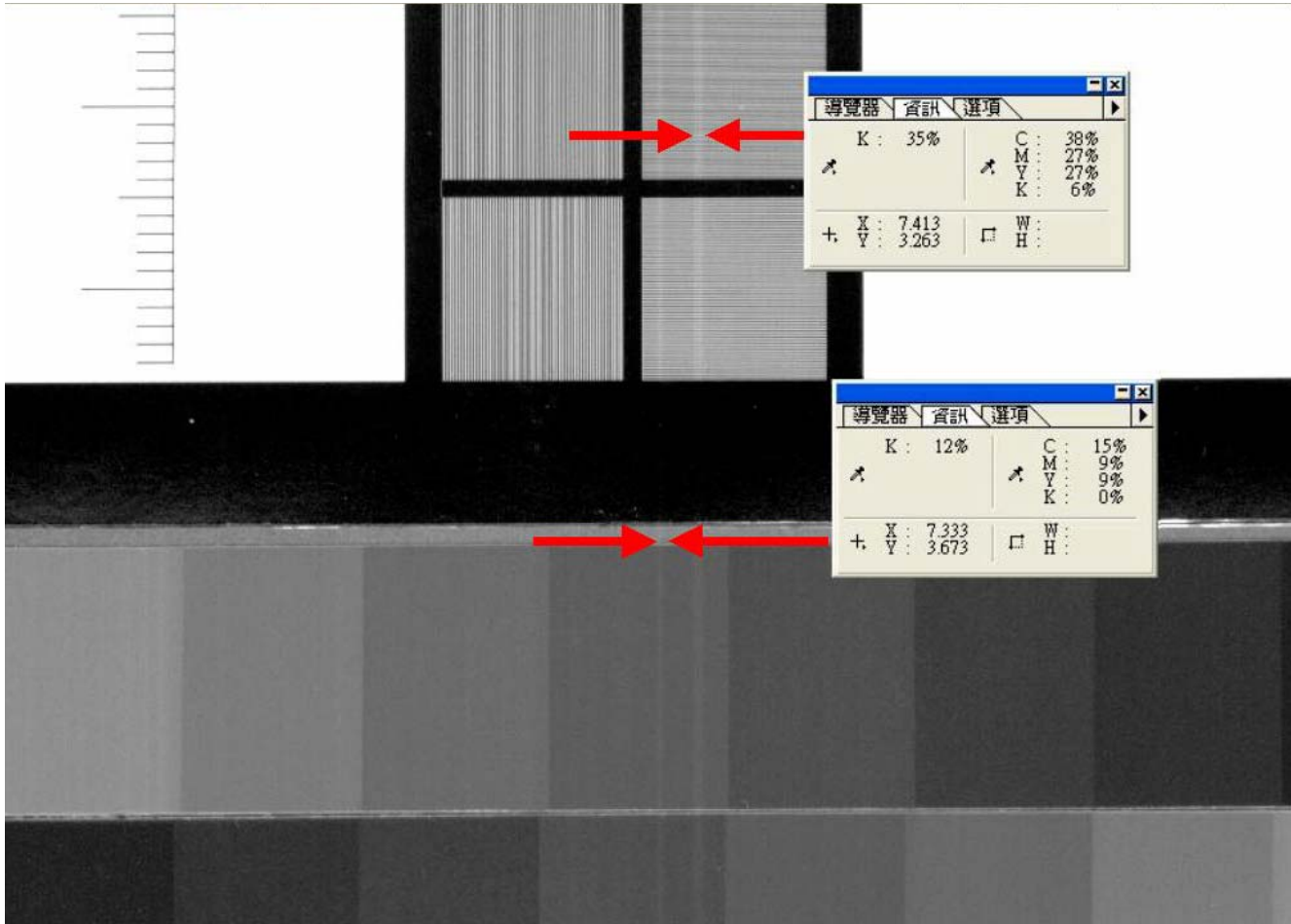


When you put Calibration Data CD into DVD drive of PC, the Calibration Data CD will install its shading data : **SM52_ShadingData.ini** into PC Windows system automatically and the shading data in CD will be saved into path at **C:\ Program Files \ Microtek \ ScanWizard Medi \ Scanners **.



If this message show up in dialogue box, it means Shading Data: **SM52_ShadingData.ini** for Reflective Scan of Medi-6000 had installed into **C:\ Program Files \ Microtek \ ScanWizard Medi \ Scanners ** already.

Below illustration is the scanned image from Reflective Scan of Medi-6000 with vertical stripe issue.



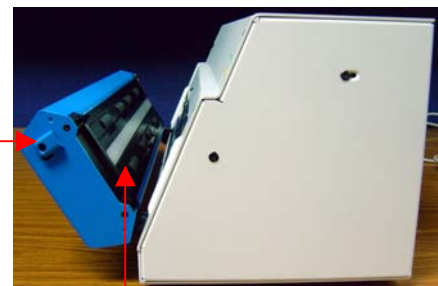
If you found out the scanned image from Reflective Scan of Medi-6000 has vertical stripe in it, first of all, please make sure the shading data : [SM52_ShadingData.ini](#) in Calibration Data CD had copied into **C:\Program Files\Microtek\ScanWizard Medi\Scanners** already. Next, please open the Upper Assembly and check the cleanness of surface in Glass Assembly of Medi-6000 as below illustration.

Press down both ends of " Hook Stem " in Upper Housing, and then release the lock of Upper Assembly from Base Assembly of Medi-6000.



Here is an Upper Housing.

Here is Hook Stem.



Here is an Upper Assembly.



Check the cleanness of surface in Glass Assembly.

If there is dirty particles or residues leave on surface of Glass Assembly, please use [Anti Dust Cloth](#) in bundled package of Medi-6000 for cleaning as below illustration.



If above checking is done, but the scanned image from Reflective Scan of Medi-6000 still has the same vertical stripe in it. By this way, [you shall contact local Microtek distributor](#) who will support to produce a new shading data : [SM52_ShadingData.ini](#) with utility : [CaliTool.exe](#) and [Calibration Target](#) for Reflective Scan of your Medi-6000 locally..

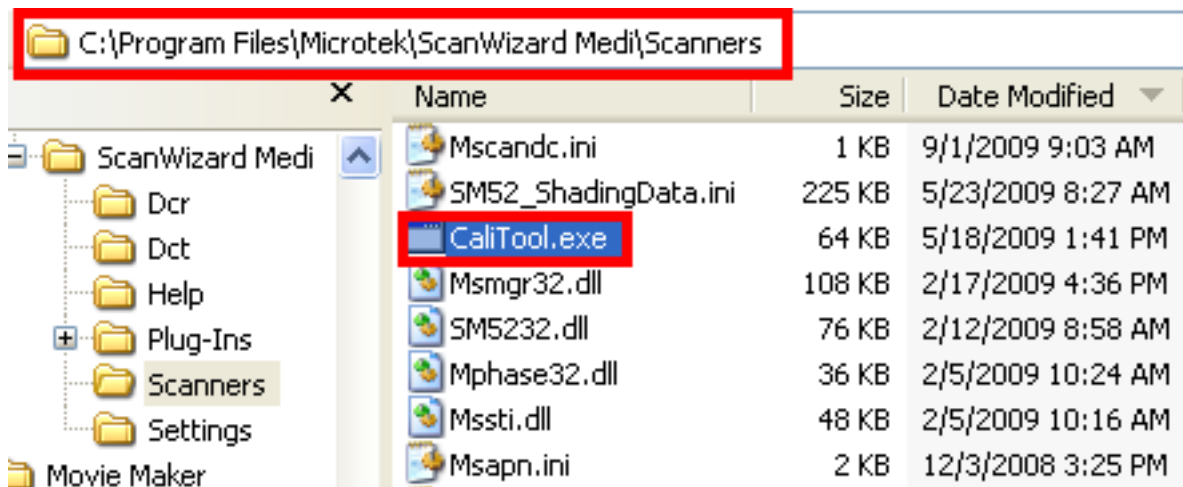
Below illustration is the [Calibration Target](#) for Reflective Scan of Medi-6000.



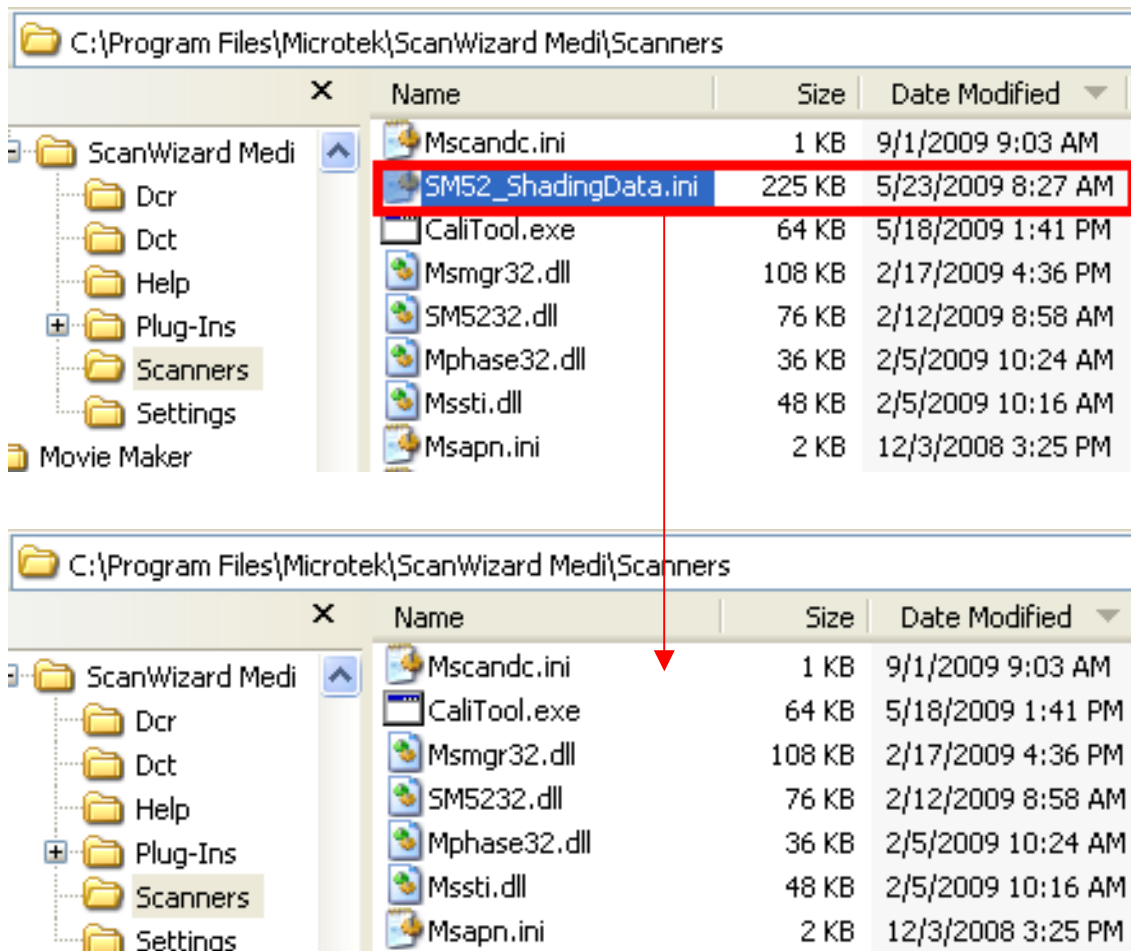
Before you use [Calibration Target](#) to produce a new shading data : [SM52_ShadingData.ini](#) for Reflective Scan of Medi-6000, please make sure there is no dirty and scratch on surface of [Calibration Target](#).

Please refer to the following procedure to produce a new shading data : [SM52_ShadingData.ini](#) for Reflective Scan of Medi-6000.

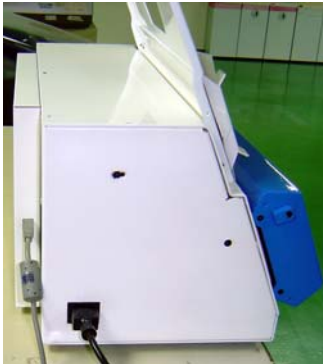
Step 1 : Copy the utility : [CaliTool.exe](#) to [C:\Program Files\Microtek\ScanWizard Medi\Scanners](#).



Step 2 : Delete the original shading data : [SM52_ShadingData.ini](#) (example : date code is May 23, 2009) from path at [C:\Program Files\Microtek\ScanWizard Medi\Scanners](#).



Step 3 : Make sure USB cable is connected between PC and Medi-6000, and then power up Medi-6000 until Medi-6000 is in ready status, after that, put **Calibration Target** into Paper Tray Assembly of Medi-6000.



Step 4 : Click to execute utility : **CaliTool.exe** from path at **C:\ Program Files \ Microtek \ ScanWizard Medi \ Scanners **, and then type “ 1 ” to select Medi-6000 with **mode code : 2152** in dialogue box, after that, the utility will start the process of Calibration for Medi-6000 automatically.

```
C:\Program Files\Microtek\ScanWizard Medi\Scanners\CaliTool.exe
Please make sure the target is in paper tray ,and select a machine...
1.Medi-6000      <Model Code 2152>
2.Medi-6000      <Model Code 2153>
3.M600           <Model Code 2157>
4.M600           <Model Code 215F>
5.Cancel
:-
```

Select to type “ 1 ” for Medi-6000 with mode code : 2152 in the list.

Step 5 : After the sequence of first calibration is done, please put **Calibration Target** into Paper Tray Assembly of Medi-6000 again, after that, press **Space** key in Keyboard for next Calibration.

```
C:\Program Files\Microtek\ScanWizard Medi\Scanners\CaliTool.exe
=====Calibration Tool=====
Phase 1:
Speed Mode calibration is Running ...
Speed Mode calibration success
Press Space to start the next Phase.
```



Press **Space** key in Keyboard to start the process of next Calibration for Medi-6000.



Step 6 : After the sequence of the second calibration is done, please put [Calibration Target](#) into Paper Tray Assembly of Medi-6000 again, after that, press [Space](#) key in Keyboard for next Calibration.

```
C:\Program Files\Microtek\ScanWizard Medi\Scanners\CaliTool.exe

=====Calibration Tool=====
Phase 1:
Speed Mode calibration is Running ...
Speed Mode calibration success
Press Space to start the next Phase.

Phase 2:
Quality Mode calibration is Running ...
Quality Mode calibtation success
Press Space to start the next Phase.
```



Press [Space](#) key in Keyboard to start the process of next Calibration for Medi-6000.



Step 7 : After the sequence of the third calibration is done, please press any key in Keyboard, and then quit it from utility : [CaliTool.exe](#).

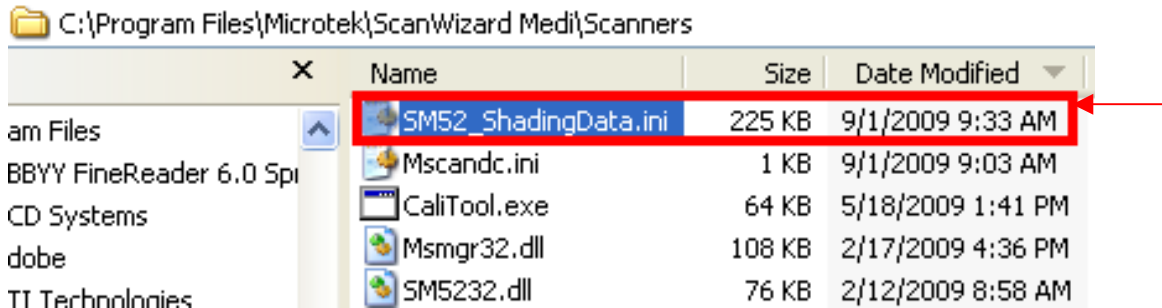
```
C:\Program Files\Microtek\ScanWizard Medi\Scanners\CaliTool.exe

=====Calibration Tool=====
Phase 1:
Speed Mode calibration is Running ...
Speed Mode calibration success
Press Space to start the next Phase.

Phase 2:
Quality Mode calibration is Running ...
Quality Mode calibtation success
Press Space to start the next Phase.

Phase 3:
Best Quality Mode calibration is Running
Best Quality Mode calibration success
Calibration is done.
Press any key to close this program...
```

Step 8 : Make sure the new shading data : **SM52_ShadingData.ini** with new date code and Is existed in path at **C:\ Program Files \ Microtek \ ScanWizard Medi \ Scanners.**



Step 9 : Check the scanned image from Reflective Scan in ScanWizard Medi has the same vertical stripe in it or not ?

