


The way how to remove blue casting from preview / scanned image in ScanWizard 5


Blue Casting image problem is specific happened while the user place **white copy paper** on glass of flatbed scanner for image Preview / Image Overview, or for Image Scanning in ScanWizard 5.

1. The solution to remove **Blue Casting** in Advanced Control Panel of ScanWizard 5 :



Before

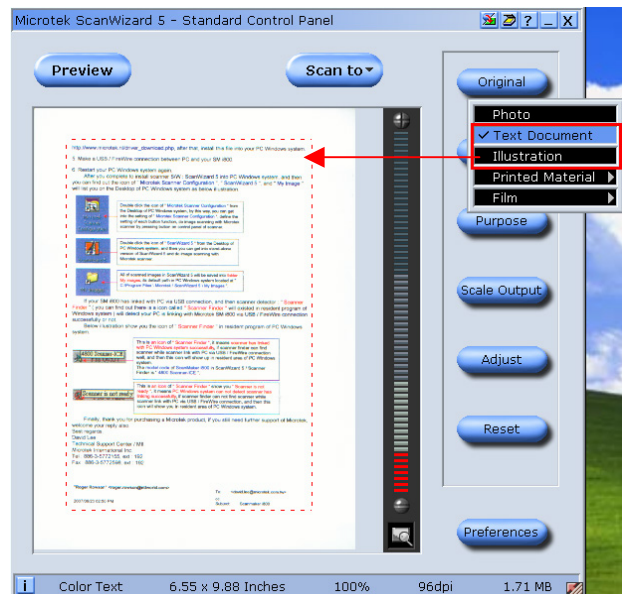
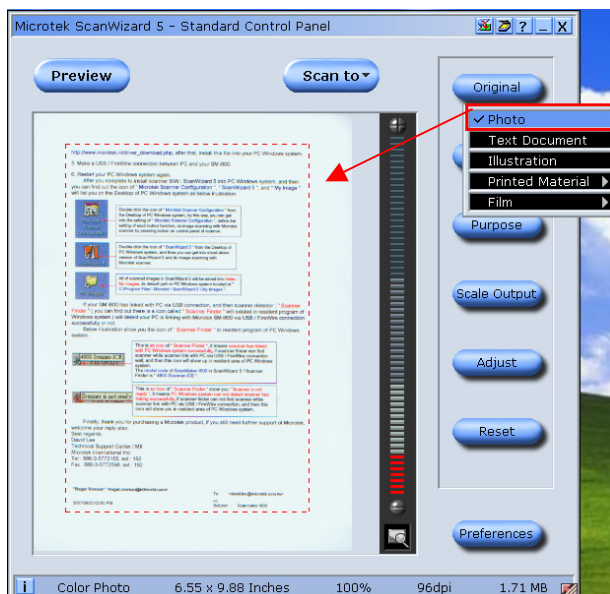
Move the icon of "[White Dropper Tool](#)" to the crop area in Scan Frame of Overview image, and then click it on the white background of Overview image. By this way, the function of **removing blue cast algorithm** will apply on it.



After

2. The solution to remove **Blue Casting** in Standard Control Panel of ScanWizard 5 :

Select the setting of "**Original**" from "**Photo**" to "**Text Document**", or to "**Illustration**" in Standard Control Panel of SW 5, by this way, the function of **removing blue cast algorithm** will apply on it.



3. The solution to remove Blue Casting in Microtek Scanner Configuration :

Select the setting of "Original" from "Photo" to "Text Document", or to "Illustration" in Microtek Scanner Configuration, by this way, the function of removing blue cast algorithm will apply on it.

