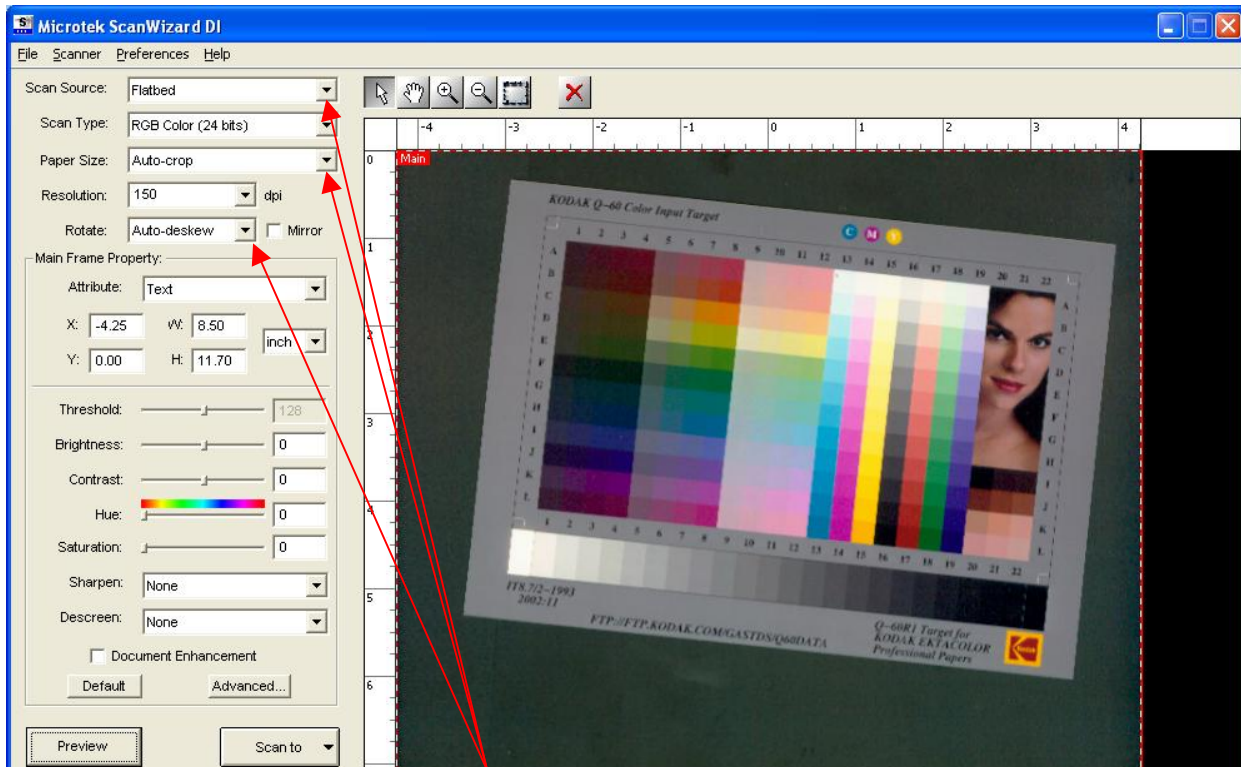
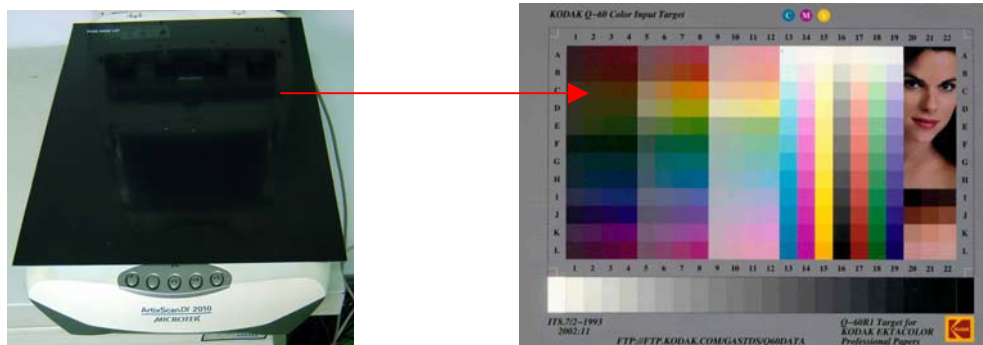


How auto crop & auto deskew function work in Flatbed & ADF scanning in SW DI

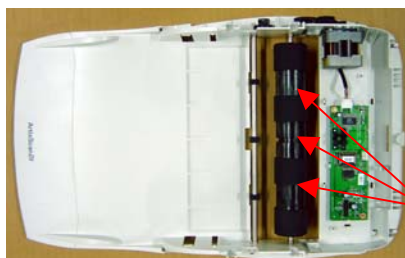
1. The user shall place **black sheet** (P/N : 215-00-150003) to cover glass on AS DI 2010, by this way, the setting of auto-crop & auto-deskew function in Flatbed scanning will be enable.



It is to keep auto crop & auto deskew function work in flatbed scanning, the user shall place **black sheet** to cover glass on AS DI 2010, and get the scanned image as below illustration.

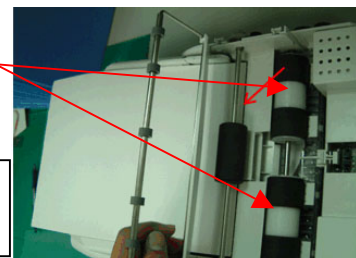


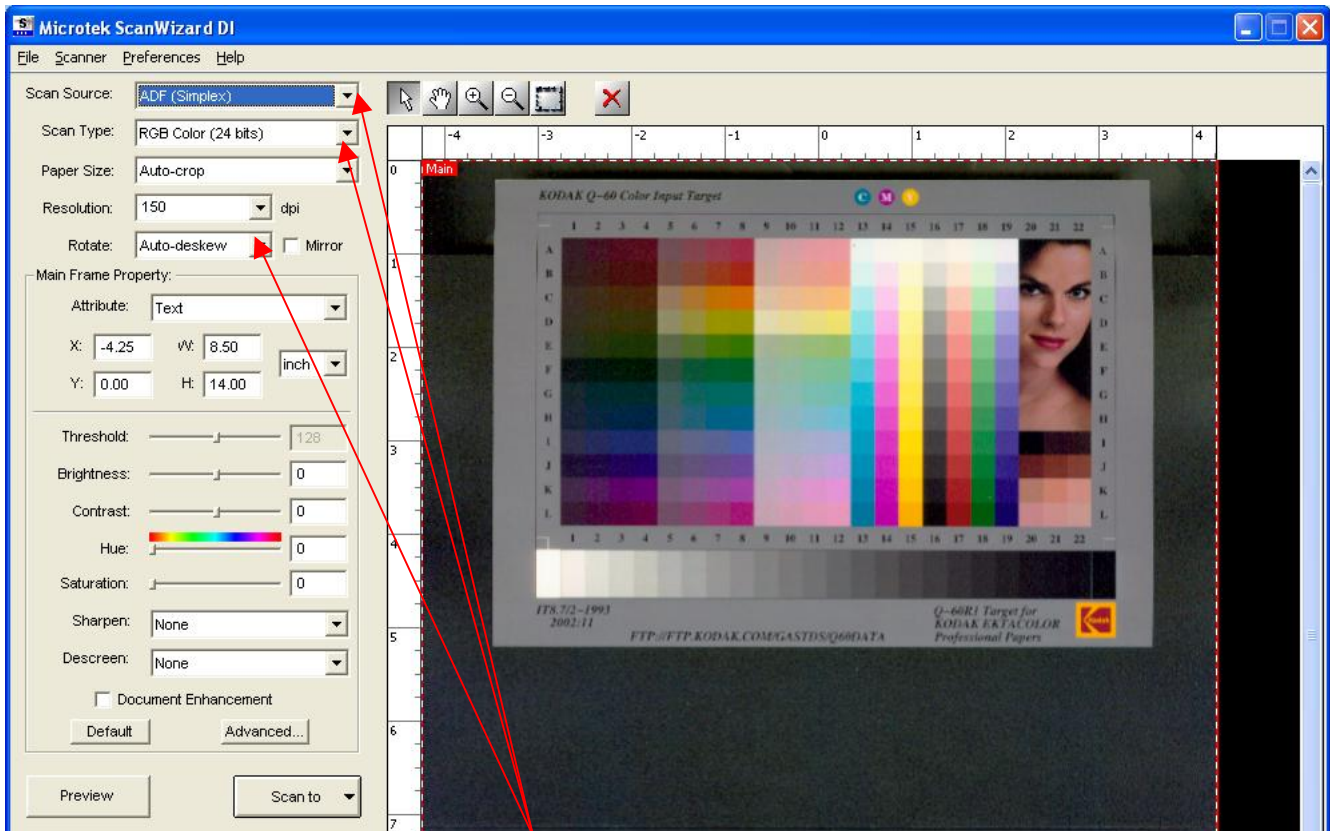
2. If the color of main roller assembly in ADF assembly is black, by this way, the setting of auto-crop & auto-deskew function in ADF scanning will be enable.



Here is old type of main roller assembly in ADF assembly.

Here is new type of main roller assembly in ADF assembly.

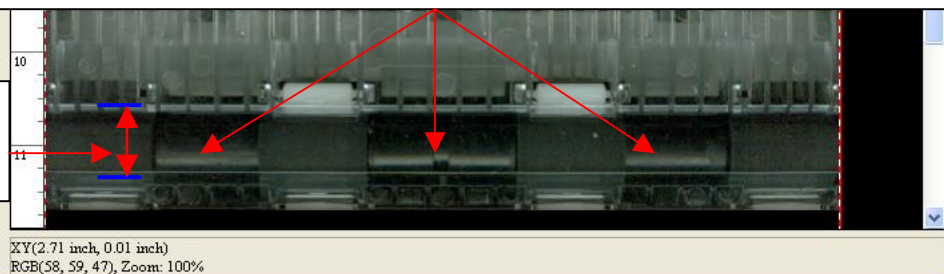




Here can show you the color of main roller assembly in ADF assembly is black after image preview in flatbed mode.

If the color of main roller assembly in ADF assembly is black, by this way, the setting of auto-crop & auto-deskew function in ADF scanning will be enable.

Here is calibration window for ADF scanning.

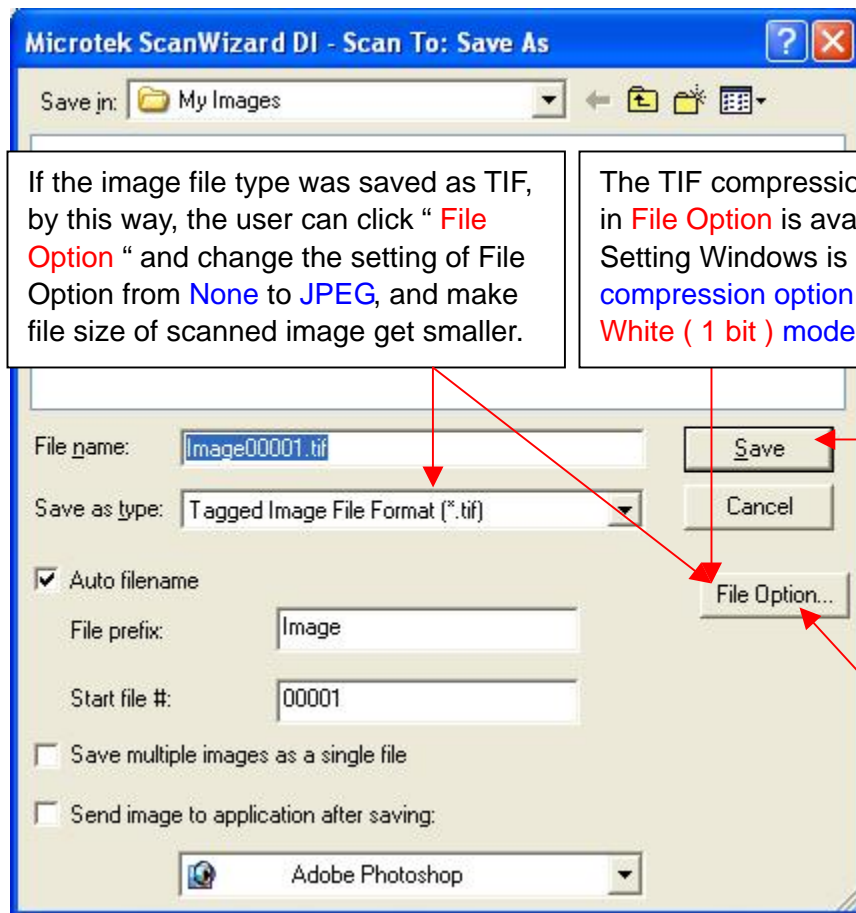


- If the user click Scan to / Copy / OCR in Setting Windows, after that, there is a dialogue box will show up as below illustration. At this moment, the user can change the setting of **File Option** from **None** to **JPEG**, while the image file type was saved as **TIF**, by this way, the file size of TIF format, will get smaller.

Notice :

If the scan type is at **gray** or **color** mode in Setting Windows, at this moment, the **File Option** will appear in dialogue box while the file format setting is **TIF**, or **PDF**, or **JPG**.

If the scan type is at **Black & white (1 bit)** mode in Setting Windows, at this moment, the **File Option** will appear in dialogue box while the file format setting is **TIF**.



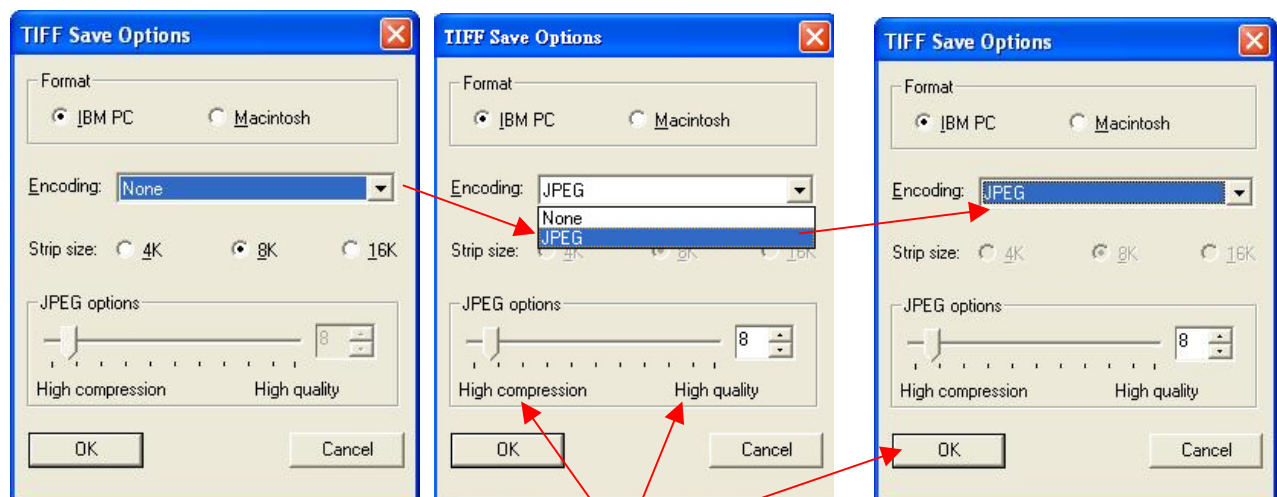
If the image file type was saved as TIF, by this way, the user can click " **File Option** " and change the setting of File Option from **None** to **JPEG**, and make file size of scanned image get smaller.

The TIF compression / PDF compression option in **File Option** is available while the scan type in Setting Windows is gray or color. **But TIF compression option is only available in Black & White (1 bit) mode.**

Scanner will start to do image scanning after the user click **Save** in dialogue box.

If the scan type is at **gray** or **color** mode in Setting Windows, by this way, the **File Option** will appear in dialogue box while the file format setting is **TIF**, or **PDF**, or **JPG**.

Change the setting of TIFF Save Options from **None** to **JPEG** as below illustration.



In JPEG options, the user can select the file saving with High compression (the number get lower, or with High quality (the number get higher), after that, click OK to save after the setting in TIFF Save Options is completed.